

oakheart



£325,000

Guide Price

The Rise, Eight Ash Green

Guide Price £325,000 - £350,000

Nestled in the charming area of Eight Ash Green, Colchester, this delightful semi-detached house offers a perfect blend of comfort and convenience. Spanning an impressive 898 square feet, the property features three well-proportioned bedrooms, making it an ideal home for families or those seeking extra space.

Upon entering, you are welcomed into a spacious reception room that provides a warm and inviting atmosphere, perfect for both relaxation and entertaining guests. The layout of the home is thoughtfully designed, ensuring

a seamless flow between the living areas and the bedrooms.

The property boasts a well-appointed bathroom, catering to the needs of modern living. The kitchen area, has been recently fitted, perfectly suited for culinary enthusiasts.

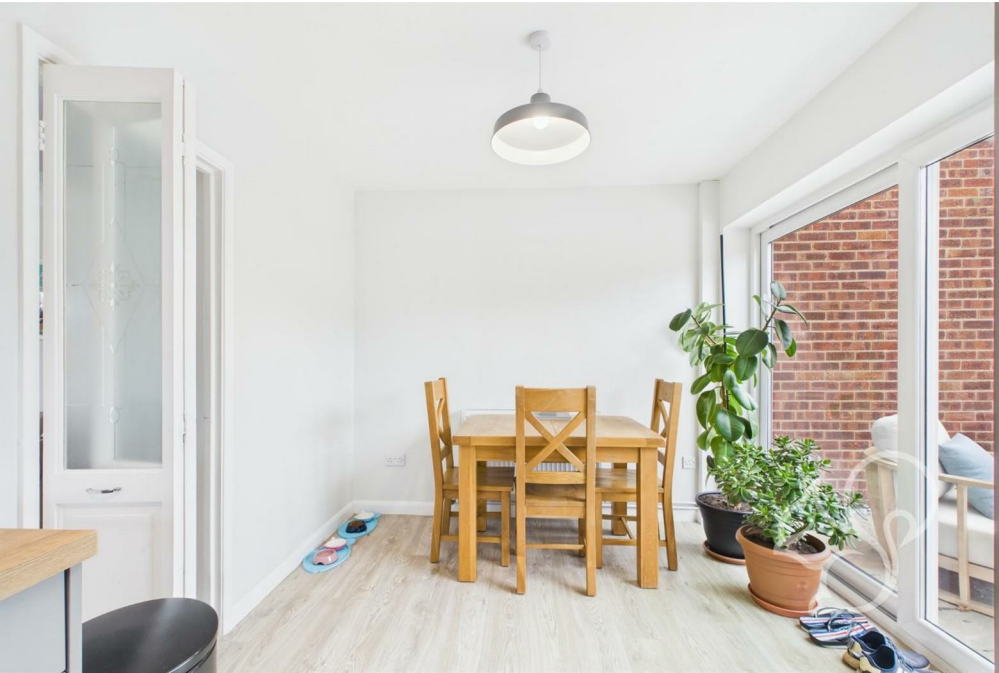
One of the standout features of this home is the ample parking available for up to three vehicles. This added convenience is sure to appeal to those with multiple cars or visitors. A garage is also ideal for storage and the rear has been converted into a bar / Office Space.

The location of The Rise offers a peaceful residential environment while still being within easy reach of Colchester's vibrant town centre, known for its rich history and array of amenities. Residents can enjoy local parks, schools, and shops, making it a desirable area for families and professionals alike.

In summary, this semi-detached house in Eight Ash Green presents an excellent opportunity for those seeking a comfortable and spacious home in a lovely community. With its three bedrooms, inviting reception room, and convenient parking, it is a property that should not be missed.











Approximate total area⁽ⁿ⁾

83.6 m²

898 ft²

(1) Excluding balconies and terraces

While every attempt has been made to ensure accuracy, all measurements are approximate, not to scale. This floor plan is for illustrative purposes only.

Calculations were based on RICS IPMS 3C standard. Please note that calculations were adjusted by a third party and therefore may not comply with RICS IPMS 3C.

GIRAFFE360

oakheart